

# KAMERE

ECO-RESORT

\*\*\*

**GISENYI, WESTERN PROVINCE, RWANDA**

[www.aitanjansen.com/kamereecoresort](http://www.aitanjansen.com/kamereecoresort)

\*\*\*

**BENNI ADLANI** COUNTRY CONSULT.  
[adlanib@aitanjansen.com](mailto:adlanib@aitanjansen.com)

**AITAN JANSEN.**



# 1 ABOUT US

Welcome to **KAMERE**, a sanctuary of sustainability, serenity, and social impact. Named after the Kinyarwanda word "**Kamere**," meaning **nature**, our resort embodies a philosophy rooted in balance—between humans and the earth. Kamere Eco-Resort was founded on a bold and beautiful mission: to use travel as a tool for conservation, community empowerment, and ecological restoration. Our purpose goes beyond hospitality—we are here to make a difference, especially for one of Rwanda's most iconic and endangered treasures: the silverback gorillas of the Virunga Mountains.







## 2 ACCOMODATIONS & AMENITIES

### Our location offers:

- Sweeping views of the **Virunga volcanoes**
- Proximity to **Nyamyumba hot springs**, local markets, and cultural villages
- Access to scenic **hiking trails**, kayaking, boat tours, and nature walks
- A rich tapestry of **Rwandan culture and biodiversity**

### Accommodations include:

- **Eco-lodges** made from locally sourced wood, clay, and bamboo
- **Lakefront villas** with solar power, rainwater systems, and composting toilets
- **Community-crafted decor**, showcasing the artistry of local cooperatives
- Open-air lounges, fire pits, and reading nooks with panoramic views
- No TVs. Just the sounds of birds, waves, and your own breath.

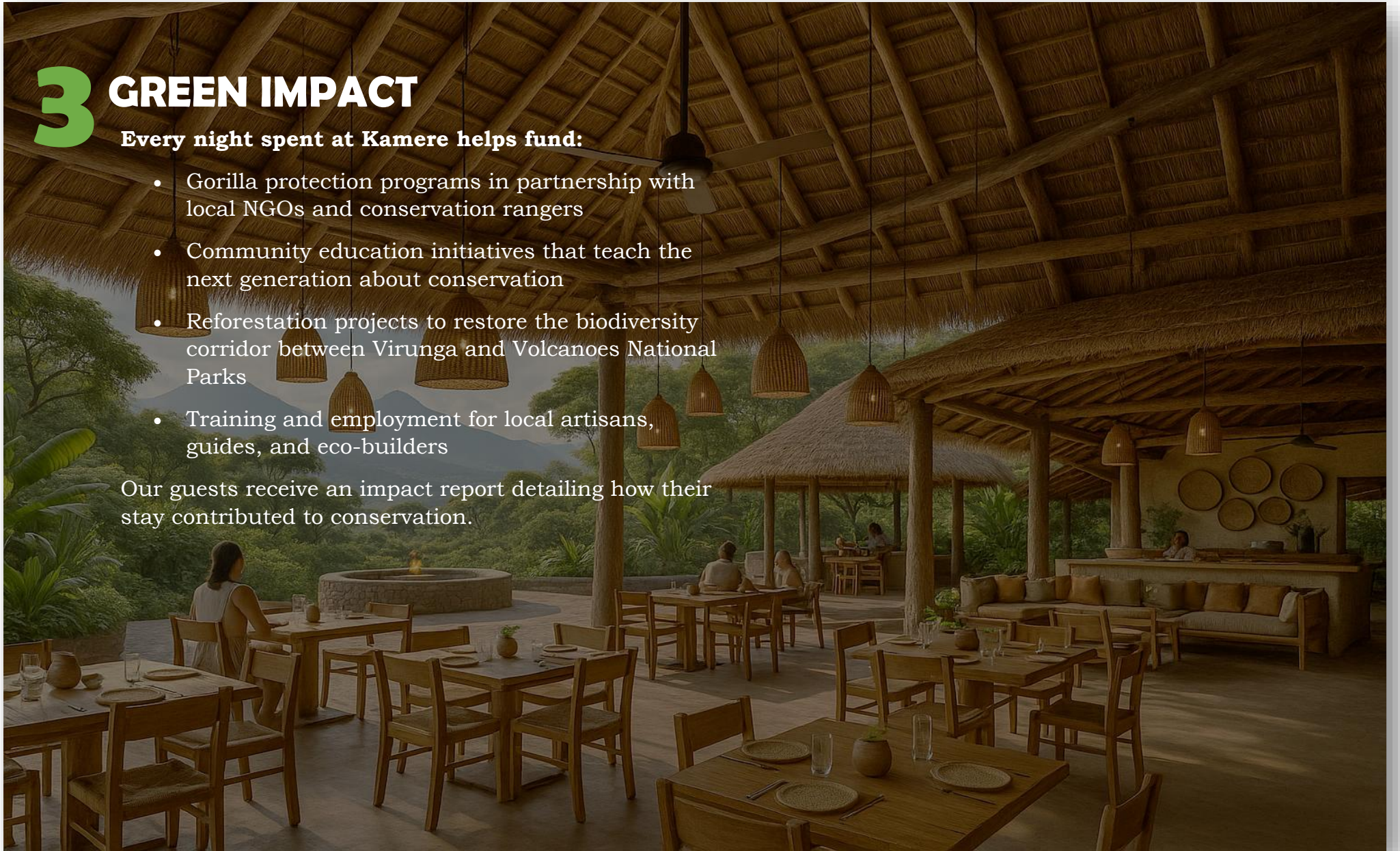


# 3 GREEN IMPACT

Every night spent at Kamere helps fund:

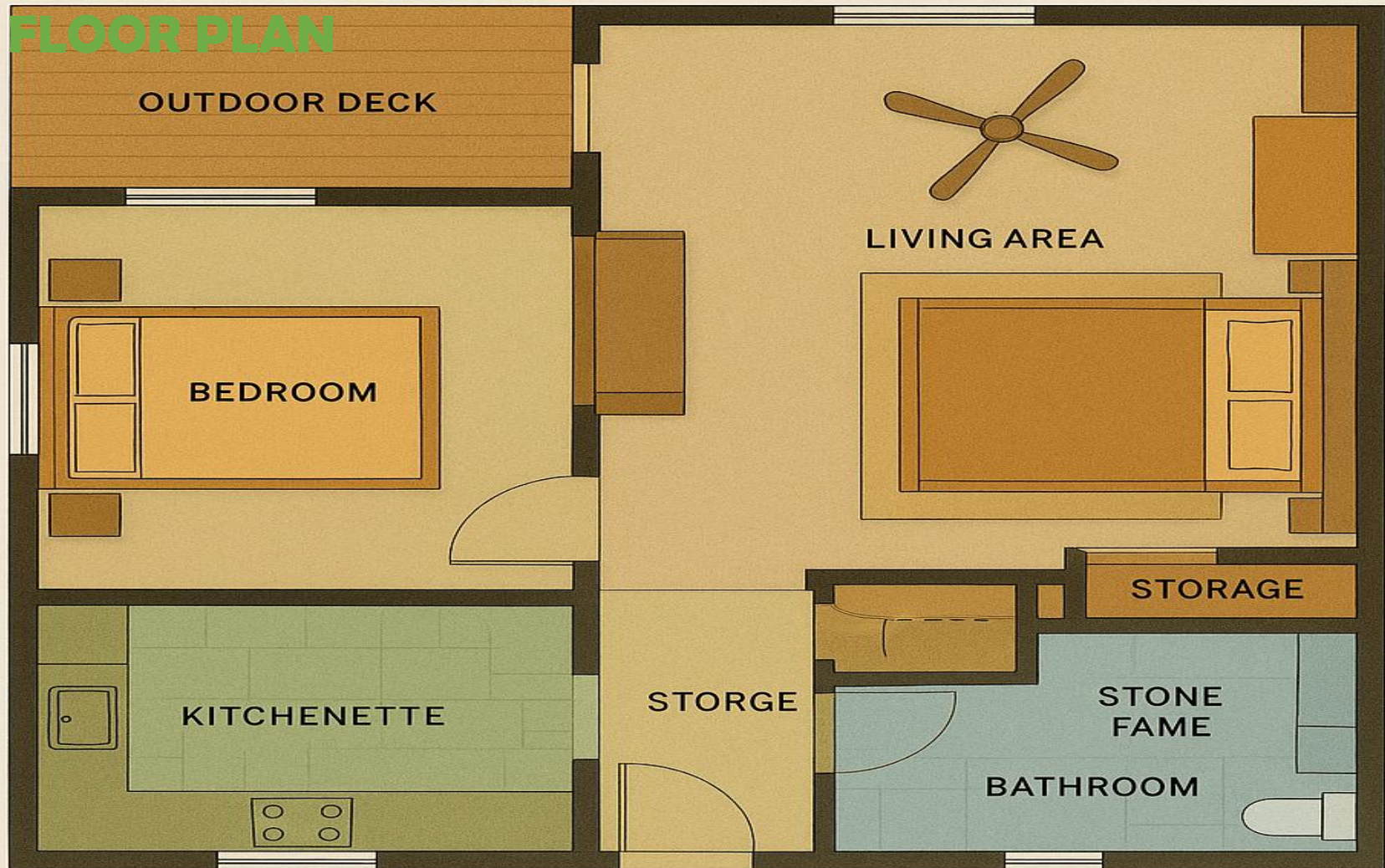
- Gorilla protection programs in partnership with local NGOs and conservation rangers
- Community education initiatives that teach the next generation about conservation
- Reforestation projects to restore the biodiversity corridor between Virunga and Volcanoes National Parks
- Training and employment for local artisans, guides, and eco-builders

Our guests receive an impact report detailing how their stay contributed to conservation.





# 4 FLOOR PLAN



WOODEN FRAME BED  
STONE

POLISHED WOOD FLOORING  
STORAGE

## KAMERE ECO-RESORT

Gisenyi, Western Province, Rwanda

### Overview:

Welcome to KAMERE, a sanctuary of sustainability, serenity, and social impact. Perched gracefully along the sparkling shores of Lake Kivu in Gisenyi, Rwanda, our eco-resort invites you to experience the raw beauty of Rwanda in a place where every sunrise brings not only peace but purpose.

Named after the Kinyarwanda word "Kamere," meaning nature, our resort embodies a philosophy rooted in balance—between humans and the earth, luxury and simplicity, indulgence and responsibility.

At Kamere, every guest becomes a steward of nature. Every stay supports a cause greater than the journey itself.

We are a team of Rwandan environmentalists, storytellers, and hospitality professionals who believe in purposeful travel. Kamere is a locally founded, locally operated initiative that places people and the planet above profit. Our staff are not just employees—they're ambassadors of a vision that connects tourism with transformation.

---

### Our Vision:

Kamere Eco-Resort was founded on a bold and beautiful mission: to use travel as a tool for conservation, community empowerment, and ecological restoration. Our purpose goes beyond hospitality—we are here to make a difference, especially for one of Rwanda's most iconic and endangered treasures: the silverback gorillas of the Virunga Mountains.

A portion of every booking at Kamere directly funds frontline initiatives to protect the endangered mountain gorillas, conserve their natural habitats, and support local communities living in harmony with the forest.

Kamere is not just a place to sleep. It is a movement to protect, preserve, and participate in something greater.

---

### **Location:**

Tucked away in the lush hills of Gisenyi, Kamere offers a tranquil base for those looking to explore the Volcanoes National Park, embark on a gorilla trekking adventure, or simply unwind by the calming waters of Lake Kivu.

Our location offers:

- Sweeping views of the Virunga volcanoes
- Proximity to Nyamyumba hot springs, local markets, and cultural villages
- Access to scenic hiking trails, kayaking, boat tours, and nature walks
- A rich tapestry of Rwandan culture and biodiversity

Whether you're a traveller, conservationist, wellness seeker, or eco-enthusiast, Kamere connects you to the spirit of the land.

---

### **Eco Highlights and Amenities:**

We've designed Kamere to blend seamlessly into its surroundings while delivering comfort, charm, and consciousness.

Accommodations include:

- Eco-lodges made from locally sourced wood, clay, and bamboo
- Lakefront villas with solar power, rainwater systems, and composting toilets
- Community-crafted decor, showcasing the artistry of local cooperatives
- Open-air lounges, fire pits, and reading nooks with panoramic views
- No TVs. Just the sounds of birds, waves, and your own breath.

Everything we build, offer, and serve at Kamere reflects our belief in sustainable living.

Our on-site restaurant offers a farm-to-table experience, with menus that change seasonally to reflect what's grown in our organic permaculture garden and sourced from nearby farms and fisheries.

Guests can enjoy:

- Traditional Rwandan dishes with a modern twist
- Plant-based options made from indigenous grains and vegetables
- Fresh juices, herbal teas, and local coffee from the hills of Rubavu
- Cooking classes led by local chefs

Eating at Kamere is not just nourishing—it's cultural, communal, and conscious.

At Kamere, we offer more than accommodation—we offer experiences that heal and inspire:

- Guided forest meditation and yoga by the lake
- Traditional Rwandan storytelling under the stars
- Visits to community cooperatives and basket-weaving workshops
- Nature photography tours and ecology education sessions
- Gorilla conservation talks and "Walk with a Ranger" excursions

Come curious. Leave changed.

---

## CONCEPTUAL BREAKDOWN

Here's a structured layout idea to guide the overall site plan, including zones for accommodation, activities, shared spaces, and natural elements:

### Entrance & Reception Area (Front Zone)

- **Eco-style gate and pathway** (lined with local flora)
  - **Open-air reception lounge** with thatched roofing and stone walls
  - Nearby **parking area** (low footprint, screened by trees)
  - **Pathways** split off to villas, restaurant, and lakefront
-



### **Accommodation Zone (Private Zone – Midsection)**

Spread out in a semi-circle or staggered rows for privacy and lake/mountain views:

- **Villas & Cabins**
    - 1–2-bedroom units (2-storey where terrain allows)
    - Oriented to face Virunga Mountains or Lake Kivu
    - Stone and thatch design, elevated with wooden decks
    - Polished wood interiors with large windows, ceiling fans, fireplaces
  - Interconnected by natural stone walkways, lantern-lit at night
  - Each with small private garden and outdoor shower option
- 

### **Activity & Relaxation Zone**

Centrally placed to connect all parts of the resort:

- Yoga & meditation deck under tall trees or near lake edge
  - Fire pit & storytelling circle with rustic benches
  - Wellness hut or lakeside spa
  - Natural pool with stone edge, blending into landscape
-

## Dining & Social Space

Lake-facing, partially elevated for sunset views:

- **Open-air restaurant**
    - Thatched roof, wooden beams, local stone walls
    - Long wooden tables, local woven decor, warm lighting
    - Farm-to-table garden behind it, herbs and vegetables grown onsite
  - **Adjacent lounge area with:**
    - Comfortable seating
    - Library shelf / conservation info corner
    - Small juice or tea bar
- 

## Lakefront Experience Zone

Right on the shoreline:

- **Wooden dock for:**
    - Canoes / kayaking
    - Sunrise or sunset lounging
  - Floating deck or platform for yoga / photography
  - Bonfire space by the lake for night gatherings
-



## **Conservation & Community Zone**

Optional addition nearby or off to the side:

- Interpretive centre or conservation education hut
  - Office for conservation NGO staff
  - Craft studio / cooperative workshop for local artisans
-

## AITAN JANSEN

Aitan Jansen is a leading property development and construction company headquartered in Dubai, United Arab Emirates. With a global footprint, the company undertakes high-profile projects across various continents, showcasing its expertise in delivering world-class infrastructure.

### Core Services:

- **Property Development:** From residential complexes to commercial hubs, Aitan Jansen specializes in developing properties that cater to diverse needs and preferences.
- **Construction:** The company offers comprehensive construction services, including pre-construction planning, project management, and post-construction support.
- **Renovation:** Aitan Jansen is adept at transforming existing structures into modern, functional spaces, ensuring minimal disruption to occupants.
- **Consulting:** Leveraging its extensive experience, the company provides consulting services to clients, guiding them through every phase of their projects.

### Vision and Values:

Aitan Jansen is dedicated to delivering innovative and sustainable solutions that enhance the quality of life for communities worldwide. The company upholds the highest standards of integrity, professionalism, and customer satisfaction.

### Contact Information:

- **Address:** Dubai, United Arab Emirates
- **Phone:** +971 4 123 4567
- **Email:** [info@aitanjansen.com](mailto:info@aitanjansen.com)
- **Website:** [www.aitanjansen.com](http://www.aitanjansen.com)





# KAMERE

ECO-RESORT

\*\*\*

**GISENYI, WESTERN PROVINCE, RWANDA**

[www.aitanjansen.com/kamereecoresort](http://www.aitanjansen.com/kamereecoresort)

\*\*\*

**BENNI ADLANI** COUNTRY CONSULT.

[adlanib@aitanjansen.com](mailto:adlanib@aitanjansen.com)

**AITAN JANSEN.**